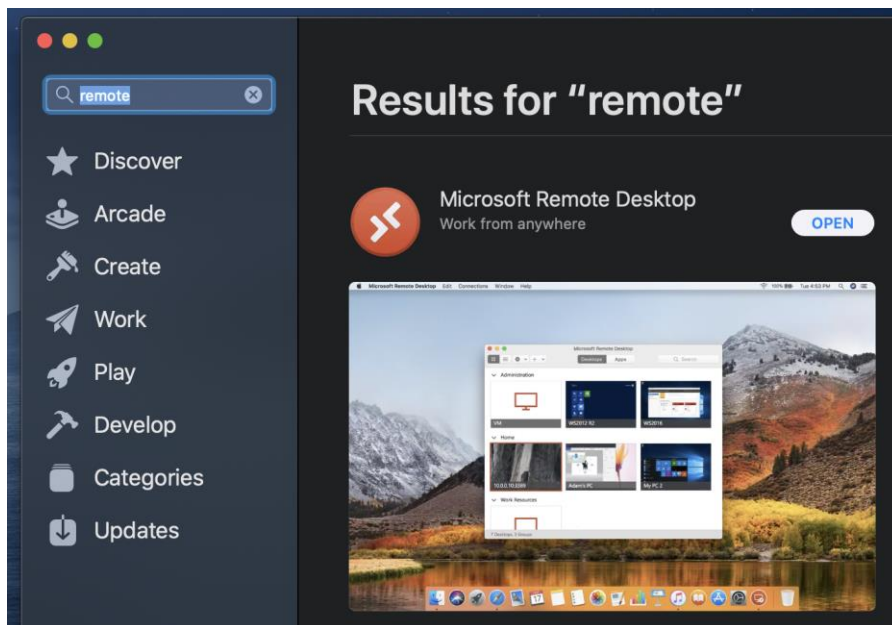
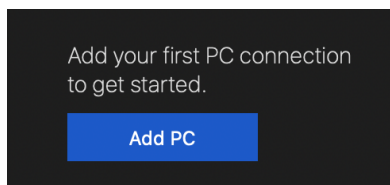


How to use the Remote Desktop on macOS

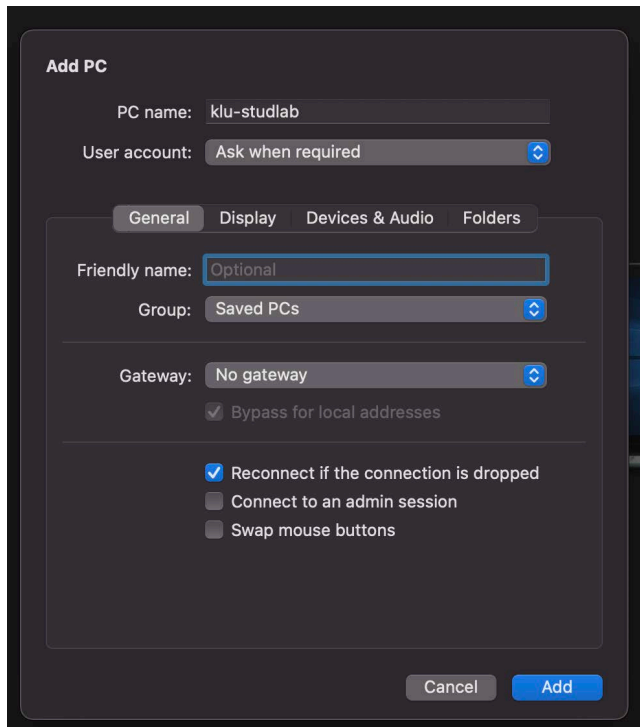
1. Search in the AppStore for “Remote”
2. You will find the “Microsoft Remote Desktop”



3. Install and open it
4. Click on “Add PC”

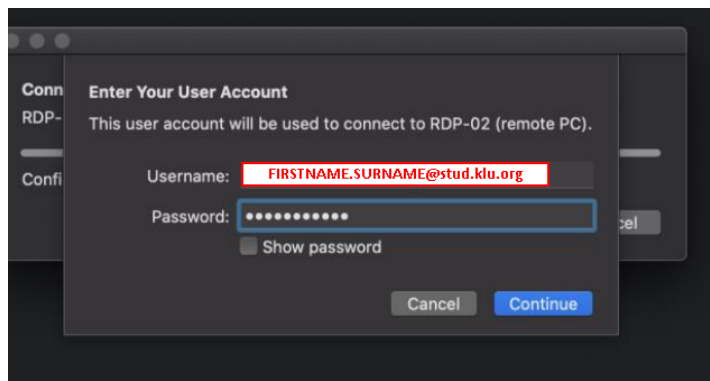


5. You have to add one connection to "klu-studlab".



6. Double click on the added connection

7. It will ask for your credentials



8. After login in, click on continue.

